

Capacidad de Levantamiento

Modelo TMS700B

50 TON

R50-B



35 - 110 ft.
(10.6 - 33.5 m)



7,800 lbs.
(3538 kg)



100%



En la Parte Trasera



Longitud de Brazo Hidráulico



Libras

(Pies)	35	40	50	*60	70	80	90	100	110
9	@100,000 (67.5)								
9	90,000 (67.5)								
10	80,000 (66)	68,000 (69.5)	58,150 (74)						
12	67,400 (62)	63,800 (66)	55,450 (71.5)	44,600 (75)					
15	58,050 (56)	54,700 (61)	48,050 (67.5)	42,250 (71.5)	35,600 (74.5)	33,000 (77)			
20	44,950 (44.5)	43,000 (52)	39,400 (61)	33,600 (66.5)	30,500 (70.5)	28,000 (73.5)	25,500 (75.5)	23,300 (77.5)	
25	35,200 (28.5)	35,050 (41.5)	32,400 (54)	27,750 (61)	25,200 (66)	23,800 (69.5)	22,000 (72)	20,400 (74.5)	18,500 (76)
30		28,400 (27)	27,150 (46)	23,350 (55)	21,100 (61)	20,400 (65.5)	19,300 (68.5)	17,550 (71.5)	15,750 (73.5)
35			23,200 (36.5)	20,000 (49)	18,050 (56)	17,400 (61.5)	16,400 (65)	15,200 (68)	13,650 (70.5)
40			18,850 (24)	17,250 (41.5)	15,650 (50.5)	15,050 (57)	14,150 (61.5)	13,300 (65)	12,000 (68)
45				15,000 (33)	13,600 (45)	13,200 (52.5)	12,350 (57.5)	11,550 (61.5)	10,600 (65)
50				12,800 (21.5)	11,950 (38.5)	11,600 (47.5)	10,850 (53.5)	10,100 (58.5)	9,500 (62)
55					10,500 (31)	10,300 (42)	9,630 (49.5)	8,950 (54.5)	8,470 (58.5)
60					9,300 (20)	9,130 (36)	8,570 (45)	7,950 (51)	7,500 (55.5)
65						8,120 (29)	7,640 (40)	7,080 (47)	6,670 (52)
70						7,230 (19)	6,800 (34)	6,330 (42.5)	5,940 (48.5)
75							6,060 (27.5)	5,670 (38)	5,300 (45)
80							5,400 (18)	5,080 (32.5)	4,740 (40.5)
85								4,540 (26)	4,230 (36)
90								4,030 (17)	3,780 (31)
95									3,370 (25)
100									2,990 (16)
Mínimo ángulo de boom (grados.) de longitud indicada (sin carga)									
0									
Máxima longitud de boom (ft.) en 0 grados ángulo de boom (sin carga)									
110									

NOTA: () Los ángulos del boom están en grados.

@Capacidad máxima de 100.000 kg en la parte trasera sólo dentro del arco de 6° cualquiera de los dos lados de la línea central.

Ángulo del Boom	35	40	50	*60	70	80	90	100	110
0°	15,500 (27.8)	12,240 (33)	7,860 (43)	4,970 (52.8)	3,670 (63)	2,710 (73)	1,960 (83)	1,360 (93)	880 (102.8)

NOTA: () Referencia radios en pies.

*60 ft. de longitud del boom es de la mitad adentro extendido y mitad afuera extendido.

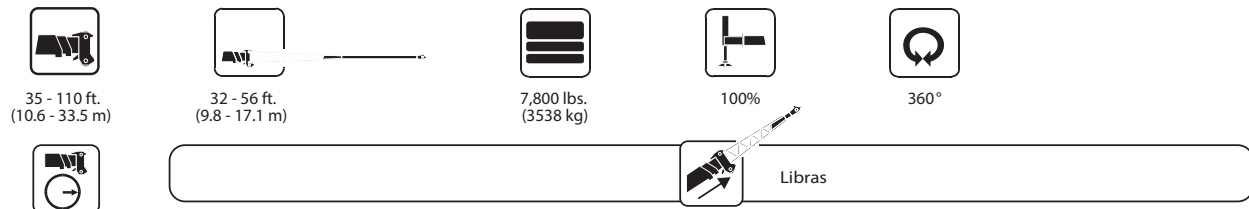
A6-829-009967B

Capacidad de Levantamiento

Modelo TMS700B

50 TON

R50-B



(Pies)	32 ft. LONGITUD			44 ft. LONGITUD			56 ft. LONGITUD		
	0° DESPLAZAMIENTO	15° DESPLAZAMIENTO	30° DESPLAZAMIENTO	0° DESPLAZAMIENTO	15° DESPLAZAMIENTO	30° DESPLAZAMIENTO	0° DESPLAZAMIENTO	15° DESPLAZAMIENTO	30° DESPLAZAMIENTO
30	9,500 (78)								
35	8,710 (76)	*7,500 (78)		7,320 (77.5)					
40	8,000 (74)	7,070 (75.5)	*5,800 (78)	6,880 (75.5)			5,560 (77)		
45	7,340 (71.5)	6,760 (73.5)	5,690 (76)	6,490 (74)	5,060 (77.5)		5,250 (75.5)		
50	6,740 (69.5)	6,470 (71.5)	5,440 (73.5)	6,140 (72)	4,840 (75.5)	*3,770 (78)	4,970 (73.5)	3,900 (78)	
55	6,190 (67)	6,210 (69)	5,210 (71.5)	5,820 (69.5)	4,650 (73.5)	3,600 (76)	4,710 (72)	3,740 (76)	
60	5,500 (65)	5,970 (67)	5,010 (69)	5,530 (67.5)	4,460 (71.5)	3,450 (74)	4,480 (70)	3,600 (74.5)	2,650 (78)
65	4,850 (62.5)	5,280 (64.5)	4,820 (67)	5,220 (65.5)	4,300 (69.5)	3,320 (72)	4,270 (68)	3,410 (72.5)	2,540 (76)
70	4,270 (60)	4,670 (62)	4,650 (64.5)	4,640 (63.5)	4,140 (67.5)	3,190 (70)	4,070 (66.5)	3,220 (70.5)	2,430 (74)
75	3,740 (57.5)	4,110 (59.5)	4,420 (62)	4,110 (61.5)	3,940 (65)	3,070 (67.5)	3,890 (64.5)	3,050 (68.5)	2,340 (72.5)
80	3,260 (55)	3,600 (57)	3,880 (59.5)	3,640 (59)	3,750 (63)	2,970 (65.5)	3,720 (62.5)	2,890 (66.5)	2,250 (70)
85	2,810 (52.5)	3,120 (54.5)	3,380 (57)	3,200 (57)	3,570 (61)	2,870 (63)	3,530 (60.5)	2,750 (64.5)	2,170 (68)
90	2,410 (49.5)	2,690 (52)	2,920 (54)	2,800 (54.5)	3,190 (58.5)	2,780 (60.5)	3,130 (58.5)	2,620 (62.5)	2,100 (66)
95	2,030 (47)	2,290 (49)	2,490 (51)	2,430 (52)	2,790 (56)	2,700 (58)	2,760 (56.5)	2,500 (60.5)	2,030 (64)
100	1,690 (43.5)	1,920 (46)	2,100 (48)	2,080 (49.5)	2,420 (53.5)	2,630 (55.5)	2,420 (54.5)	2,390 (58.5)	1,970 (61.5)
105	1,370 (40.5)	1,580 (42.5)	1,730 (45)	1,770 (47)	2,070 (51)	2,320 (52.5)	2,110 (52)	2,290 (56)	1,910 (59.5)
110	1,070 (37)	1,250 (39)	1,380 (41.5)	1,470 (44)	1,750 (48.5)	1,970 (50)	1,820 (49.5)	2,180 (54)	1,860 (57)
115				1,200 (41)	1,450 (45.5)	1,640 (46.5)	1,540 (47.5)	1,880 (51.5)	1,810 (54)
120							1,290 (45)	1,600 (48.5)	1,670 (51.5)

NOTE: () Los ángulos del boom están en grados.
*Esta capacidad se basa en el máximo ángulo del boom.

A6-829-009539G

Diagrama de Elevación

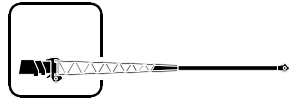
Modelo TMS700B

50 TON

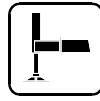
R50-B



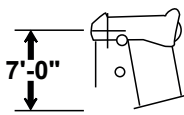
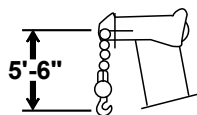
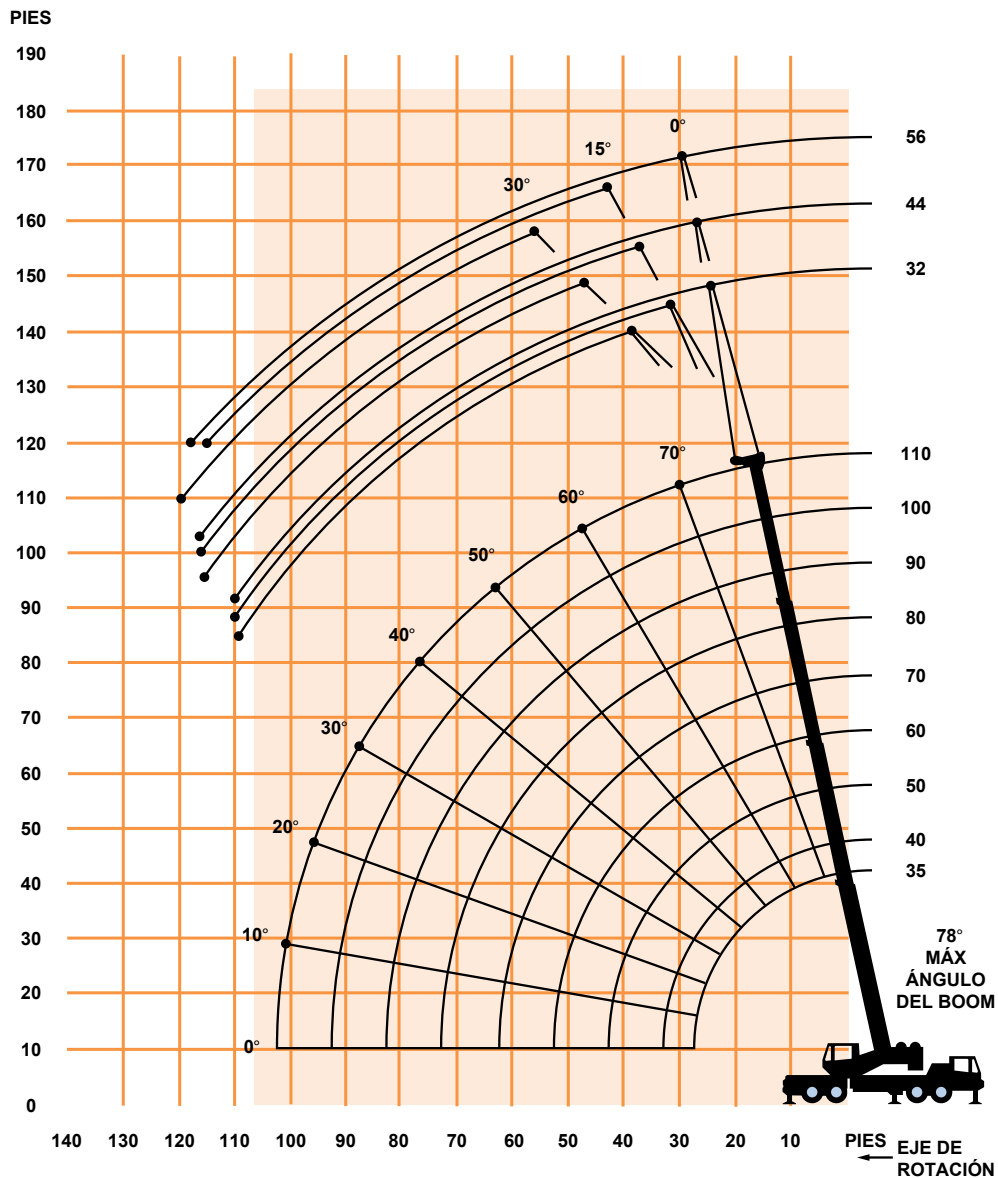
35 - 110 ft.
(10.6 - 33.5 m)



32 - 44 - 56 ft.
(9.8 - 13.4 - 17.1 m)



360°



LAS DIMENSIONES SON MAYORES
PARA LOS GANCHOS DE POLEA
Y LA BOLA DE DEMOLICIÓN,
CON EL BLOQUE ANTI-TWO ACTIVADO.

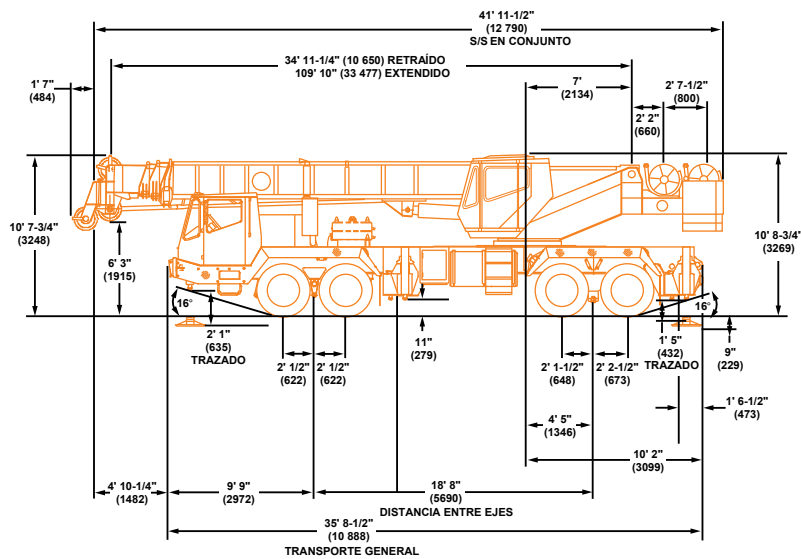
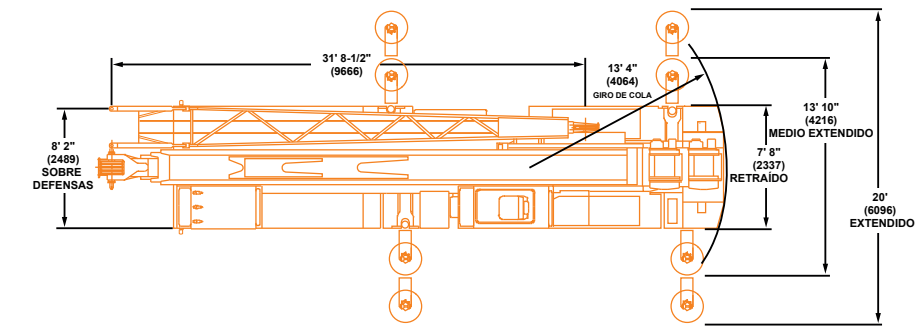
Dimensiones

Modelo TMS700B

50 TON

R50-B

ALTURA MÁXIMA.	ANCHO MÁXIMO.	EXT. ESTABILIZADORES	ESTABILIZADORES RANGO COMPLETO	LARGO MÁXIMO.
3.25 mts	2.50 mts	1.90 mts	6.10 mts	12.80 mts



Nota: () Referencia dimensiones en mm.

PESO ADMISIBLE	FRENTE	TRASERA	GWW
	39,504 lbs.	49,680 lbs.	89,184 lbs.
Máquina básica con 110 pies. (33,5 M) de boom	28,588 lbs. (12 968 kg)	38,174 lbs. (17 316 kg)	66,762 lbs. (30 283 kg)
32 - 56 ft. (9.8 - 17.1 m) tele lateral	2,035 lbs. (923 kg)	300 lbs. (136 kg)	2,335 lbs. (1059 kg)
32 ft. (9.8 m) fijo lateral	1,448 lbs. (657 kg)	169 lbs. (77 kg)	1,617 lbs. (733 kg)
Elevador principal y auxiliar con cuerda	(194) lbs. [(88 kg)]	685 lbs. (311 kg)	491 lbs. (223 kg)
Punta del brazo auxiliar	258 lbs. (117 kg)	(115) lbs. [(52 kg)]	143 lbs. (65 kg)
50 ton bloque	1,525 lbs. (692 kg)	(303) lbs. [(137 kg)]	1,222 lbs. (554 kg)
15 ton bloque	474 lbs. (215 kg)	(94) lbs. [(43 kg)]	380 lbs. (172 kg)
10 ton bola	699 lbs. (317 kg)	(139) lbs. [(63 kg)]	560 lbs. (254 kg)
7,800 lbs. (3538 kg) cwt. sobre s/s	(2,926) lbs. [(1327 kg)]	10,726 lbs. (4865 kg)	7,800 lbs. (354 kg)
7,800 lbs. (3538 kg) cwt. sobre carga	6,704 lbs. (3041 kg)	1,096 lbs. (497 kg)	7,800 lbs. (354 kg)
3,900 lbs. (1769 kg) cwt. sobre carga/3,900 lb s. (1769 kg) on s/s	1,889 lbs. (857 kg)	5,911 lbs. (2681 kg)	7,800 lbs. (354 kg)

Radio de giro..... 43' 9" (13 335 mm)

Glosario

Boom = Brazo Hidráulico Telescópico
Jib = Plumín (brazo)
Main = Principal
Power Pin. Fly = Clavija de alimentación eléctrica
Offset = Desplazamiento
Winch = Malacate / Cabrestante

Unidades de medidas

cc = Centímetros cúbicos
ft = Pies
g = Grados
In = Pulgadas
kg = Kilogramos
kPa = Kilopascales
lb = Libras
m = Metros
mm = Milímetros
psi = Libras por pulgada cuadrada
ton = Toneladas